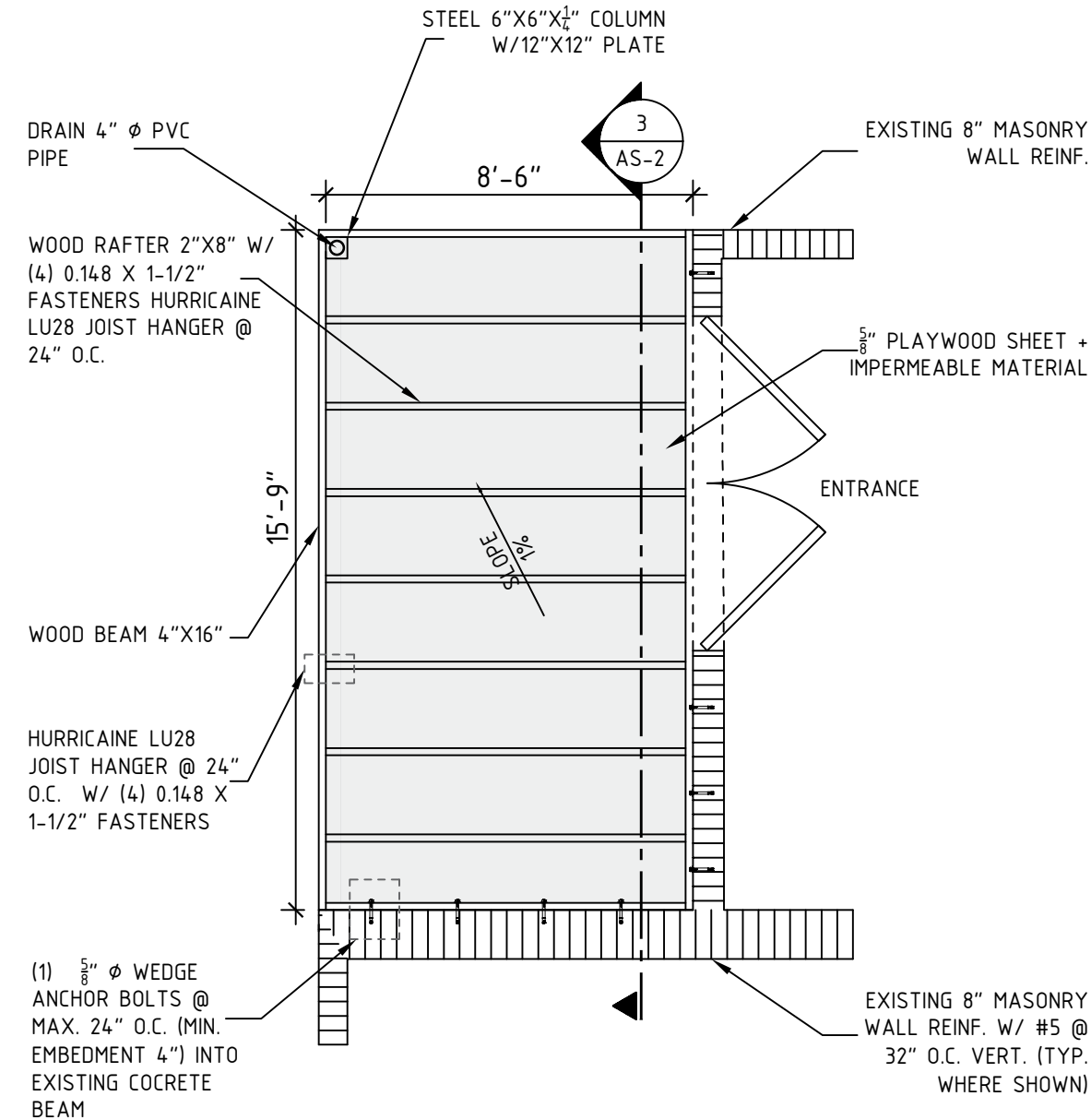
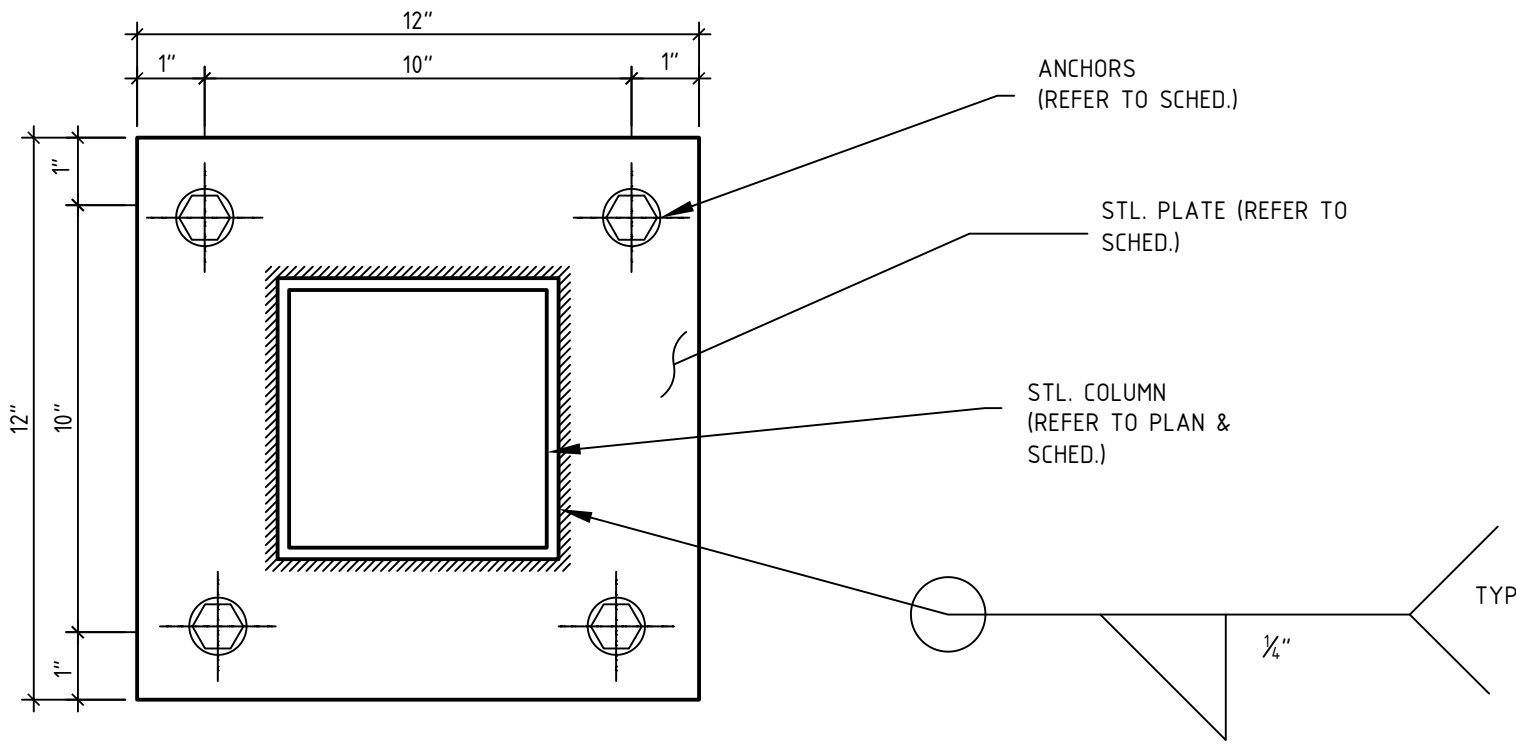


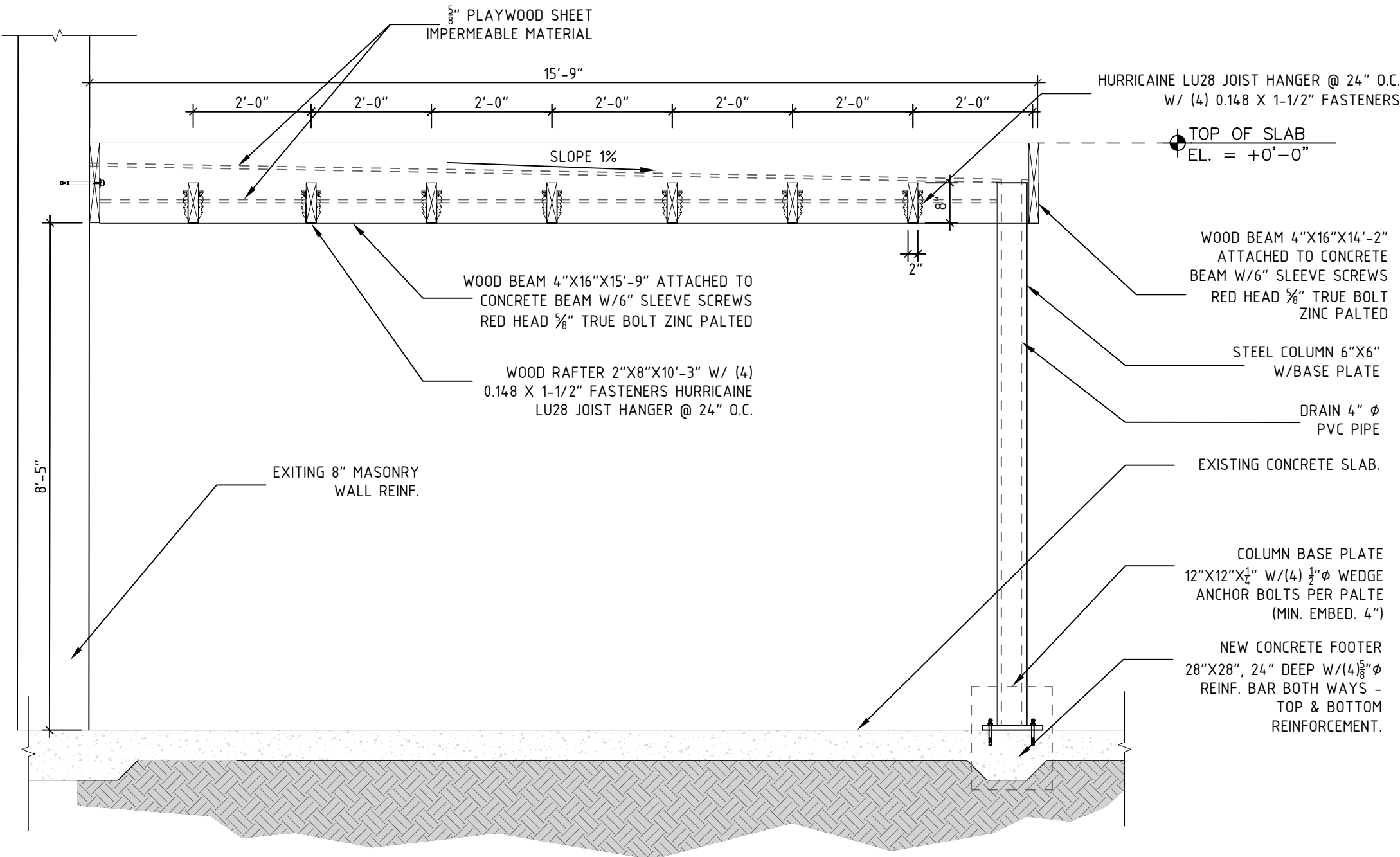
① ENTRANCE ROOF STRUCTURE LOCATION PLAN
SCALE: 3/32" = 1'-0"



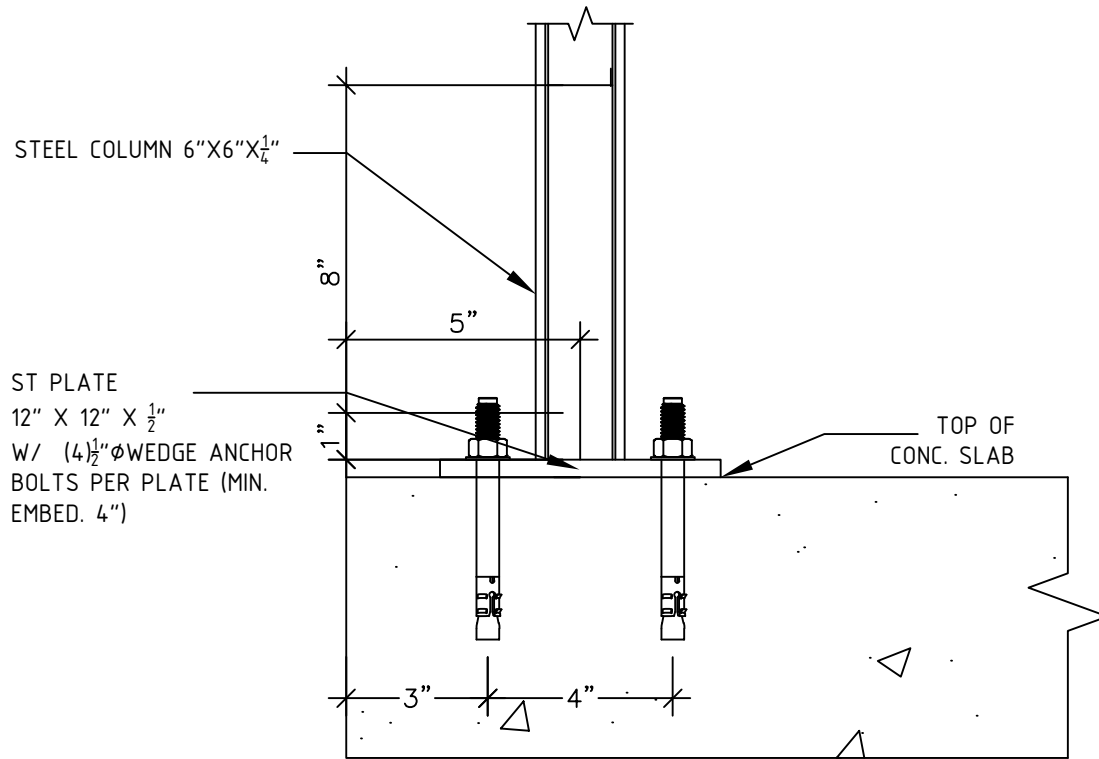
② ENTRANCE ROOF STRUCTURE FLOOR PLAN
SCALE: 1/4" = 1'-0"



④ NEW STEEL COLUMN PLATE DETAIL
SCALE: 1-1/2" = 1'-0"



③ ENTRANCE ROOF STRUCTURE SECTION
SCALE: 1/2" = 1'-0"



⑤ NEW STEEL COLUMN CONNECTION DETAIL
SCALE: 3/16" = 1'-0"

GENERAL NOTES:

- OUTDOOR ENVIRONMENTS ARE GENERALLY MORE CORROSIVE TO STEEL. IF YOU CHOOSE TO USE ZMAX® OR HDG FINISH OR STAINLESS STEEL MATERIAL ON AN OUTDOOR PROJECT, YOU SHOULD PERIODICALLY INSPECT YOUR CONNECTORS AND FASTENERS OR HAVE A PROFESSIONAL INSPECTION PERFORMED. REGULAR MAINTENANCE, INCLUDING WATER-PROOFING OF THE WOOD USED IN YOUR OUTDOOR PROJECT IS ALSO A GOOD PRACTICE.
- COATINGS AVAILABLE:
 - ZMAX: GALVANIZED (G185) 185 OZ. OF ZINC PER SQUARE FOOT OF SURFACE AREA. (HOT-DIP GALVANIZED PER ASTM A653 TOTAL BOTH SIDES). THESE PRODUCTS REQUIRE HOT-DIP GALVANIZED FASTENERS (FASTENERS WHICH MEET THE SPECIFICATIONS OF ASTM A153).
 - HDG - HOT DIP GALVANIZED: PRODUCTS ARE HOT-DIP GALVANIZED AFTER FABRICATION (14 GA. AND THICKER). THE COATING WEIGHT INCREASES WITH MATERIAL THICKNESS. THE MINIMUM SPECIFIED COATING WEIGHT IS 2.0 OZ. PER SQUARE FOOT. (PER ASTM A123 TOTAL BOTH SIDES). THESE PRODUCTS REQUIRE HOT-DIP GALVANIZED FASTENERS (FASTENERS WHICH MEET THE SPECIFICATIONS OF ASTM A153).
 - SS - STAINLESS STEEL: CONNECTORS ARE MANUFACTURED FROM TYPE 316L STAINLESS STEEL, AND PROVIDE GREATER DURABILITY AGAINST CORROSION. STAINLESS-STEEL NAILS ARE REQUIRED WITH STAINLESS-STEEL PRODUCTS, AND ARE AVAILABLE FROM SIMPSON STRONG-TIE.
- WHEN USING STAINLESS STEEL CONNECTORS, USE STAINLESS STEEL FASTENERS. WHEN APPLICATIONS ALLOW THE USE OF ZMAX/HDG GALVANIZED CONNECTORS, USE HDG FASTENERS THAT MEET THE SPECIFICATIONS OF ASTM A153 OR EQUIVALENT COATING OFFERED ON SIMPSON STRONG-TIE FASTENERS.
- DUE TO MANY VARIABLES INVOLVED WITH OUTDOOR CONSTRUCTION, SIMPSON STRONG-TIE CANNOT PROVIDE ESTIMATES ON SERVICE LIFE OF CONNECTORS, ANCHORS OR FASTENERS.
- TO OBTAIN OPTIMAL PERFORMANCE FROM SIMPSON STRONG-TIE PRODUCTS, THE PRODUCTS MUST BE INSTALLED PROPERLY AND USED IN ACCORDANCE WITH THE INSTALLATION INSTRUCTIONS AND DESIGN LIMITS PROVIDED BY SIMPSON STRONG-TIE.
- ALL INSTALLATION NOTES AND GUIDELINES WITHIN THE CURRENT WOOD CONSTRUCTION CONNECTORS CATALOG SHALL APPLY FOR THE CONNECTORS, ANCHORS, AND FASTENERS SHOWN.
- SIMPSON STRONG-TIE RESERVES THE RIGHT TO CHANGE THE SPECIFICATIONS, DESIGN AND MODELS SHOWN WITHOUT NOTICE OR LIABILITY FOR SUCH CHANGES.
- SIMPSON STRONG-TIE DOES NOT GUARANTEE THE PERFORMANCE OR SAFETY OF PRODUCTS THAT ARE MODIFIED, IMPROPERLY INSTALLED OR NOT USED IN ACCORDANCE WITH THE DESIGN.
- ALL REFERENCES TO BOLTS OR MACHINE BOLTS (MB) ARE STRUCTURAL QUALITY THROUGH BOLTS (NOT LAG SCREWS OR CARRIAGE BOLTS) EQUAL TO OR BETTER THAN ASTM A307. GRADE A. BOLT HOLES SHALL BE AT LEAST A MINIMUM 1/32" AND NO MORE THAN A MAXIMUM OF 1/16" LARGER THAN THE BOLT DIAMETER PER 2005 NDS SECTION 11.12.
- UNLESS NOTED OTHERWISE, ALL REFERENCES TO STANDARD CUT WASHERS REFER TO TYPE A PLAIN WASHERS (W) CONFORMING TO THE DIMENSIONS SHOWN IN ASME B18.2.1 FOR THE APPROPRIATE ROD SIZES.
- UNLESS STATED OTHERWISE, SIMPSON STRONG-TIE CANNOT AND DOES NOT MAKE ANY REPRESENTATION REGARDING THE SUITABILITY OF USE OR LOAD-CARRYING CAPACITIES OF CONNECTORS INSTALLED WITH IMPROPER FASTENERS.

STEEL

- ALL FIELD WELDING SHALL BE VISUALLY INSPECTED. FIELD WELDS SHALL BE TESTED PER AWS D11.1 AS FOLLOWS: ALL PENETRATION WELD SHALL BE ULTRASONICALLY TESTED, 50 PERCENT OF FILLED WELDS SHALL BE TESTED BY DYE PENETRANT OR MAGNETIC PARTICLE.
- INSTALLATION OF HIGH STRENGTH BOLTS SHALL BE INSPECTED.

WOOD NOTES:

ALL LUMBER SHALL BE #2 OR BETTER GRADE SOUTHERN YELLOW PINE UON. ALLOWABLE STRESSES SHALL BE AS INDICATED IN THE "DESIGN VALUES FOR WOOD CONSTRUCTION", A SUPPLEMENT TO THE NATIONAL DESIGN SPECIFICATION 2012 EDITION BY THE AMERICAN FOREST AND PAPER ASSOCIATION. ALLOWABLE MAXIMUM WATER CONTENT SHALL BE 19%.

ALL FASTENERS (NAILS, SCREWS, BOLTS, RODS) SHALL BE HOT DEEP GALVANIZED (G60 MINIMUM GALVANIZED COATING) OR 300 SERIES STAINLESS STEEL.

STEEL CONNECTORS SHALL CONFORM TO ASTM A653 AND SHALL BE HOT DEEP GALVANIZED PER ASTM A525 OR 300 SERIES STAINLESS STEEL.

FASTENERS AND CONNECTORS USED TOGETHER SHALL BE OF THE SAME.

ALL CUT HOLES AND INJURIES TO THE SURFACE OF TREATED WOOD SHALL BE PROTECTED BY FIELD TREATMENT MEETING AWPA STANDARD M4.

ALL TREATED WOOD PRODUCTS SHALL BE HANDLED AND FIELD FABRICATED IN ACCORDANCE WITH AWPA STANDARD M4 FOR THE CARE OF PRESERVATIVE TREATED WOOD PRODUCTS.

DO NOT USE STANDARD CARBON-STEEL OR ALUMINUM PRODUCTS IN DIRECT CONTACT WITH PRESSURE TREATED WOOD.

BRACING SHOWN ON PLANS DOES NOT INCLUDE TEMPORARY BRACING REQUIRED FOR THE ERECTION AND INSTALLATION OF TRUSSES PRIOR TO THE INSTALLATION OF PERMANENT CROSS BRACING AND WEB LATERAL BRACING REQUIREMENTS. TEMPORARY BRACING IS THE RESPONSIBILITY OF THE CONTRACTOR AND SHOULD REMAIN IN PLACE AS LONG AS NECESSARY FOR THE SAFE AND ACCEPTABLE INSTALLATION OF THE WOOD ELEMENT.

FASTENER NOTES:

- THE SPECIFIED QUANTITY, TYPE AND SIZE OF FASTENER MUST BE INSTALLED IN THE CORRECT HOLES ON THE CONNECTOR TO ACHIEVE PUBLISHED LOADS. INCORRECT FASTENER SELECTION OR INSTALLATION CAN COMPROMISE CONNECTOR PERFORMANCE AND COULD LEAD TO FAILURE.
- NAIL DIAMETER ASSUMES NO COATING. SEE TECHNICAL BULLETIN T-NAILGUIDE FOR MORE INFORMATION.
- THE SIMPSON STRONG-DRIVE® SD STRUCTURAL-CONNECTOR SCREW IS THE ONLY SCREW APPROVED FOR USE WITH OUR CONNECTORS.
- NAIL REFERENCE IN TABLES: 16D = 16D COMMON, 10D = 10D COMMON



REVISIONS	BY
05/12/2023	BLDG.

CESAR CASTILLO, PE

Consulting Engineer - FL Reg # 68447
4908 SW 72nd Ave, Ste. A, Miami, FL 33155
Phone: (954) 803-8948 - ccastillo@panamericane.com

2 STORY RESIDENCE
REMODELING
680 NE 50TH TERRACE,
MIAMI, FL 33137

ROBERT LASALLE
680 NE 50TH TERRACE,
MIAMI, FL 33137

PROFESSIONAL SEAL:

Digitally signed by Cesar Castillo, PE
DN: cn=Cesar Castillo, PE, email=cesarcastillo@panamericane.com, Date: 2023.08.14 14:45:18 -04'00'

LAST DATE REV.:
05-12-2023

FLOOR PLAN,
ELEVATION,
SECTIONS & DETAILS

SHEET: 13 OF 26

X-1